



24 HOUR SERVICE

PRIVATE CHAPEL OF REST

GOLDEN CHARTER FUNERAL PLANS

Waterlooville: 02392 641366

Southbourne: 01243 374644

Havant: 02392 175462

[www.mooresfd.co.uk](http://www.mooresfd.co.uk)





# MOORE'S

TRADITIONAL FUNERAL DIRECTORS

## Welcome to Moore's - Independent Funeral Directors

### ABOUT US

We are a team of conscientious and caring funeral professionals with decades of experience. Our heritage of serving the communities of Waterlooville, Southbourne and Havant stretches back over generations. We promise to help you in every way we can in your bereavement journey and provide a discrete and bespoke personal service, 24 hours a day, 365 days a year. If you have questions regarding our funeral services or need our support, please call us today.

### SERVICES

- Traditional, Modern & Eco Funerals
- Burials & Cremations
- 24 Hour Personal Service
- Home Arrangements on Request
- Guidance, Help & Support
- Religious & Non-Religious Services for All Denominations
- Catering & Venue Hire
- Repatriation
- Private Chapel of Rest

### ADDITIONAL SERVICES

- Alternative Vehicles & Transportation
- Floral Tributes
- Memorial Masonry
- Bespoke Options
- Obituary Notices
- Choirs, Musicians & Singers
- Video & Audio Tributes
- Memorial Jewellery & Keepsakes
- Ashes Caskets & Scatter Tubes

### OUR VALUES

Serving our local families for generations, we know that each funeral is unique. We have built our approach on six key values:

**COMPASSION** - We are caring and empathetic with all our clients, their families and friends

**INTEGRITY** - We are transparent and act with respect, honesty and openness, with everyone we work with and in everything we do

**PERSONAL** - We see you as an individual, our dedicated team will provide what you want, the way you want

**INCLUSIVE** - We are part of our community, respectful, engaging and welcoming to all

**ATTENTION TO DETAIL** - We are dedicated and professional throughout, and set ourselves the highest standards of care across every aspect of our service

**PROACTIVE** - We have a can-do attitude and are prepared to go the extra mile for you and your family, to ensure you have just what you want for your loved one

## OUR PROMISE

We capture what our values mean for us in one simple promise to you, our customers:

**“We promise to give you a personalised service, with support, care and reassurance when you need it most”**

## OUR TEAM

Our friendly and professional team is highly trained and always available to assist you with any aspect of the funeral of your loved one.

## WHEN SOMEONE PASSES AWAY

**When someone passes away, there are several steps that need to be taken care of.**

### **If your loved one dies at home: Getting the Medical Certificate**

If your loved one passes away at home, the first step will be to call their doctor. If the doctor decides there is no need to contact the coroner, they will supply the local Registrar with a Medical Certificate of Cause of Death. Thereafter, you will need to contact us as your chosen the funeral director to arrange bringing the deceased into our care.

### **What if the doctor does not agree to sign the death certificate?**

If the doctor does not agree to sign the death certificate or there is an inquest, they will refer to the coroner and a post-mortem may need to take place which will take a bit longer. If this is the case, contact us and we will talk you through the next steps.

### **If your loved one dies elsewhere:**

**In Hospital:** the hospital team will liaise with the doctor on your behalf, and your doctor will advise you on the next steps, and when to give us a call.

**Care Home or Hospice:** the care staff will usually liaise with the doctor or practice nurse in the first instance. The process remains the same as above.

**On holiday or outside of the UK:** If this occurs, contact us as soon as possible and we can arrange for repatriation to bring your loved one back home.

### **Who can register the death?**

Death is usually registered by the next of kin or a relative of the deceased. Alternatively, this can be done by the person who was with the deceased at the time of their death or the person who is arranging the funeral.

### **What to prepare: What documents do I need for death registration?**

Contact the registrar who will make an appointment to register the death. They will need certain key information including:

- Full name, gender, date and country of birth
- Occupation: current or previous
- Address and postcode
- Parental names and occupations
- Marital status with partner(s) name, date of birth and occupation

### **What documents to expect:**

Once the registration has taken place, the death certificate will be sent out to you by post. You will also be given a “Green Form” to hand over to us at your earliest convenience. We will take care of everything else from then on. If a post-mortem has been carried out, the coroner will issue a Form 6 Certificate directly to us, as your chosen funeral director.

## TELL US ONCE

We recommend using the ‘Tell Us Once’ service available through GOV.UK. This allows you to report a death to most government organisations in one go. If you have any other questions, please call us.

## BEFORE THE FUNERAL

It's almost impossible to be fully prepared when the time comes, however, there are a few things you need to consider when planning the funeral.

### **Burial or Cremation**

A key decision is whether to arrange a burial or cremation. If you know what the deceased wanted, let us know. If you are unsure, you may wish to check their will or expression of wishes or talk to friends and other family members. You must also check if the deceased had taken out a funeral plan.

### **Religious or non-religious service**

Another important consideration is whether the deceased was religious or a member of a specific place of worship. You would likely want to arrange the funeral following his/her faith; if so, please do let us know.

### **Repatriation**

If your loved one passes away whilst abroad, they can be repatriated back to their home country if needed. Repatriation can be to and from the UK. We offer guidance and help throughout the entire repatriation process to ensure that your loved one is brought back home to be buried or cremated.

## DAY OF THE FUNERAL

This is the day you pay a unique tribute to the life of your loved one. Depending on your choice, the day typically includes Funeral Procession, Funeral Ceremony, Burial or Cremation and a Wake (reception).

### **Funeral Procession**

On the day itself, we will arrive at our agreed meeting point in good time so you can view any floral tributes before leaving for the service. Family and friends who are traveling in our funeral limousines will need to arrive at the agreed location before we start the procession. On arrival at the funeral venue, our professional pallbearers or your loved one's family and friends will escort the coffin with dignity and respect into the service hall led by our funeral director.

### **Funeral Ceremony**

The ceremony will start at the time booked for you, following the pre-arranged order of service. Every funeral ceremony is completely unique to every family. Traditionally, close family will sit in the first few rows, however you can arrange the seating as you would like.

After the service, we will show you to the area where the flowers and floral tributes will be placed.

### **Burial or Cremation**

If you have held the service at a separate place of worship prior to burial or cremation, we will escort you to the next destination for the committal.

### **Wake (reception)**

Many families choose to hold a catered reception following the funeral. Friends and family come together to reminisce and celebrate the life of the deceased. You can organise the reception at your home or at another venue, it is up to you.

## AFTER THE FUNERAL

After the funeral service, many families choose to commemorate their loved ones by having a memorial or keepsake to keep their memories alive. If you'd like to do something special after the service do let us know – we're happy to help!

### Following a Cremation

If we have arranged a cremation service for you, we can arrange to collect the ashes on your behalf free of charge and hold them in our care until you decide what you would like to do.

Many families choose to commemorate the ashes immediately, others prefer waiting until a special day or an opportunity when the entire family can come together.

Should you wish to keep your loved one's ashes with you, we have a selected range of urns available to keep the ashes safe in your home as well as a range of keepsakes and ashes and fingerprint jewellery.

### Following a burial

If your loved one was buried, it can take 12-18 months for the grave to settle. This means organising a fitting memorial headstone can take a bit of time and needs consideration well in advance. Please give us a call and we'd be more than happy to answer any questions you may have. We're here for you.

### Bereavement Support

As your funeral director, supporting your bereavement journey is important to us. If you need additional support or a list of helpful contacts, please do reach out at any time.

## OUR FUNERALS

Allow us to step in and take care of everything. We pride ourselves on handling and preparing each funeral with the utmost care and respect. To achieve our aim, we provide a range of set funeral packages, as well as bespoke and individually tailored funeral options.

### Traditional Funerals

Our team is committed to using our industry know-how and local expertise to arrange a traditional funeral that meets all your requirements. From arranging all details with local churches, connecting you with faith groups and organising the crematoria on your behalf, we can take care of it all.

### Modern Funerals

If you're looking for something a little different from a traditional funeral, modern funerals often allow a more creative and personal touch to the service. From helping you select specific music to personalising the entire theme of the funeral, we're fully committed to creating the perfect modern funeral service, just as you would like it.

### Eco Funerals

In today's world, there are a variety of creative, colourful and planet-friendly ways to plan a funeral service. That's why we created an eco-friendly option that will honour and fulfil all your wishes, without taking away from the earth.

Natural gowns or shrouds can also be used to reduce the environmental impact. Coffins made of natural materials such as pine, seagrass, willow, bamboo, banana leaf and wool are more natural alternatives to the traditional ones and will degrade naturally minimising the environmental impact.

### Natural burials

For a completely green funeral, a natural burial is one of our most environmentally friendly options. Natural burial sites and meadows often have strict criteria which may not offer all the facilities of traditional cemeteries.

To find out more about natural burials – please speak with one of our team.

# Testimonials

*"I would like to take this opportunity to thank you and all of your colleagues for carrying out my Father's funeral with such compassion and care. It was a beautiful day."*

**Gill T & Eileen H, Chidham**

*"I wish to thank you so very much for all you did for me and my family at our very sad time. You did so much in such a short time. It all went off so nicely."*

**MB & Family, Southbourne**

*"There are no words that can really express our gratitude in the care and the way that you all looked after us and our Dad on a really distressing day. So many thanks are due."*

**Amanda & Family, Waterlooville**

*"I would like to say a big thank you for helping us when our mother passed away. My sister and I knew nothing about arranging a funeral but you guided us through the process in a kind, unassuming way. You showed dignity and respect to our Mum, which helped us in our grieving."*

**Mrs B, Waterlooville**

# Funeral Plans



**A funeral plan is an easy way to arrange the funeral you want in advance.**

---

A plan allows you to specify your wishes and pay for the funeral director's services included in your plan. As our customers often tell us, that can bring peace of mind to you and your family. A plan from Golden Charter also includes an allowance towards third party costs. These are essential, non-funeral director services such as the cremation or burial fees, plus the minister or officiant's fee to perform the service.

**At Moore's Funeral Directors, we work in partnership with Golden Charter to provide you with a safe and reliable way to plan ahead.**

---

As one of the UK's largest funeral plan providers\*, Golden Charter has helped 900,000 people make funeral provisions\*\* so we're completely confident in offering their plans to you.

**Everyone has different needs when it comes to funeral planning, so we make sure the plans we offer are as flexible as possible.**

---

When you get in touch, we'll be happy to discuss your funeral requirements and tailor a plan to suit you. Rest assured a plan from Golden Charter is available to all UK residents who are over 18, regardless of age or state of health.

**Would you like to know more information about how a Golden Charter funeral plan could work for you?**

---

We can provide you with all of the information you need to make an informed decision for you and your family, so get in touch today!

\*Based on selling 14% of funeral plans in the UK in 2021

\*\*Correct at April 2022.

Moore's Funeral Directors is an appointed representative of Golden Charter Limited trading as Golden Charter Funeral Plans which is authorised and regulated by the Financial Conduct Authority (FRN:965279). Registered in England No. 02511598 Registered Office: One Fleet Place, London EC4M 7WS.



# Preferred Suppliers

## Care Agency

---

### Enchanting Care

023 9400 1150

[www.enchantingcare.com](http://www.enchantingcare.com)

## Celebrant

---

### Lee Kewell

07504 179224

[www.leekewell.com](http://www.leekewell.com)

## Companionship & Transportation Service

---

### Driving Miss Daisy

03330 146211

[www.drivingmissdaisy.co.uk](http://www.drivingmissdaisy.co.uk)

## Estate Agent

---

### Wainwright Estates

02392 264500

[www.wainwrightestates.co.uk](http://www.wainwrightestates.co.uk)

## Florist

---

### Sherwood Florist

02392 477 182

## Funeral Functions

---

### Ex-Servicemen's Club

02392 484605

[www.ex-servicemensclub.co.uk](http://www.ex-servicemensclub.co.uk)

### Hollybank House

01243 377866

[www.hollybankhouse.com](http://www.hollybankhouse.com)

### The Blue Bell Inn

01243 373394

[www.bluebellinnemsworth.co.uk](http://www.bluebellinnemsworth.co.uk)

### The Flying Swan

01243 697273

### The Kings Arms

01243 374941

[www.kingsarmsemsworth.co.uk](http://www.kingsarmsemsworth.co.uk)

### The White Swan

01243 697273

[www.whiteswanbosham.co.uk](http://www.whiteswanbosham.co.uk)

## House Clearance

---

### Crouchers Clearance

07990 828926

[www.crouchersclearance.co.uk](http://www.crouchersclearance.co.uk)

## Jewellers

---

### Fine Creations

01243 372467

[www.finecreations.shop](http://www.finecreations.shop)

## Motorcycle Hearse

---

### Motorcycle Funerals Ltd

01530 274888 / 0845 375 2106

[www.motorcyclefunerals.com](http://www.motorcyclefunerals.com)

## Solicitors

---

### Andrew & Andrew Solicitors

023 9267 5555 / 01243 680800

[www.a2solicitors.co.uk](http://www.a2solicitors.co.uk)

# Hollybank House

A lovely alternative to a hotel

Private events in elegant surroundings



Hollybank House, is a lovely grade II listed Georgian Country House in north Emsworth with views to Chichester Harbour.

## Funeral Receptions & Wakes

For many people, a funeral is more than saying goodbye, it is often a celebration of a life and a time when the whole family and friends come together.

We are happy to work with your funeral directors and host both the service and wake or you are very welcome to come back and enjoy the relaxing environment after a service nearby.

- Close to 'The Oaks' Crematorium
- Car parking and outdoor space.
- Food and drink can be arranged
- Enjoy the terrace, views and gardens
- Bed & Breakfast for guests
- Sensibly priced services
- Welcome to personalise the rooms with photographs or memorabilia



Hollybank House, Hollybank Lane,  
Emsworth, Hants PO10 7UN

T: 01243 377 866  
E: [info@hollybankhouse.com](mailto:info@hollybankhouse.com)

[www.hollybankhouse.com](http://www.hollybankhouse.com)  
[facebook.com/ HollybankHouseEmsworth](https://facebook.com/HollybankHouseEmsworth)

# Fine Creations

Jewellery Sales & Valuations

We always offer a professional and friendly service



Fine Creations has been established since 1999, offering jewellery and watches to the community, as well as probate and insurance valuations.

Our services include jewellery and watch repairs, a gold buying service, commissions and free advice.

16 High Street, Emsworth PO10 7AW · T: 01243 372467

sales@finecreations.shop · www.finecreations.shop



# Driving Miss Daisy

We are family when family can't be there

A safe and reliable assisted transportation & companionship service empowering people to get out and live life to the full



Our safe and reliable assisted transportation & companionship service empowers people to get out and live life to the full. If you or a family member need a little extra compassion with day-to-day life, we can give you independence and peace of mind.

Much more than a wheelchair taxi service, we empower people to remain active and independent. Our companionship service helps to combat isolation and loneliness by encouraging social interaction in and out of the home.

We are an arm to lean on, a friend who will listen, a shopping companion and an added reassurance.

Driving Miss Daisy's unique companion & driving service operates all over the UK and can be tailored to meet the individual needs of every customer. Our assisted vehicles can be configured to allow passengers to travel comfortably in wheelchairs. If you'd like to plan a bespoke day out, find your nearest service and plan your perfect trip.

Driving Miss Daisy Ltd,  
Ameiva House  
Quartremane Road  
Portsmouth PO3 5QP

e. [csc@drivingmissdaisy.co.uk](mailto:csc@drivingmissdaisy.co.uk)  
[www.drivingmissdaisy.co.uk](http://www.drivingmissdaisy.co.uk)



Driving Miss Daisy®

# Crouchers Clearance

Stress-Free, Professional Clearance Services

We offer a full range of house clearance solutions



Crouchers Clearance services offer a professional and local service for all types of clearance jobs. We are well established, fully licensed with the environment agency, friendly and always on-time for your clearance requirements. Transfer notes are always provided where requested.

T: 07990 828926  
info@crouchersclearance.co.uk

[www.crouchersclearance.co.uk](http://www.crouchersclearance.co.uk)



# Wainwright Estates

A family run independent estate agents

Over 25 years of experience within the local property market



Wainwright Estates is a family run independent estate agents. Having both worked within the property industry for over 20 years and having worked for both corporate and independent estate agents, we now feel this has given us the perfect balance of skills to provide our clients with the highest possible levels of customer service whilst retaining a professional and pro-active approach.

Our passion for the industry and the area that we have always lived in made us decide to open up our own agency, bringing with it our own character, making us different from the 'typical estate agent'. We have always enjoyed both sides of the selling and buying

process, not only just the selling of the property but also helping people with their onward move and making it a positive experience to remember.

We will utilise modern day marketing tools such as the ever expanding and far reaching social media sites along with the traditional aspects such as a high street office frontage which will enable us to deliver a personal face to face experience which is so important to us. Our selling fee is 0.75% on a no sale no fee basis and includes professional photos and floor plans. We also undertake lettings, tenant finder or fully managed services.

T: 02392 264500  
sales@wainwrightestates.co.uk  
[www.wainwrightestates.co.uk](http://www.wainwrightestates.co.uk)

Wainwright Estates,  
3 The Westbrook Centre,  
Grassmere Way, Waterlooville PO7 8SE



# Enchanting Care

We cover areas in and around Waterlooville, Portsmouth, Havant, Emsworth, Petersfield, Horndean, Cosham and Denmead.

Quality care services in the comfort of your own home



A wide variety of in-home care services, from complex care to light domestic duties

Enchanting Care is a family-run and family-focused domiciliary care company, dedicated to the delivery of the highest standards of care to enable you to live comfortably in your own home. We are family owned and are working together to deliver the very best care. We aim to provide a bespoke package of care services built around your unique requirements, while maintaining your privacy and dignity at all times.

Our values and aims are to provide excellent individual care for our clients. We put you or your loved one at the centre of all we do. We are an innovative, reliable and flexible company. We will not compromise on quality although we do aim to offer value for money. Ultimately and simply, we care and we will always treat you with respect, honesty and consideration.

When we first meet you we will try to learn about you and make a thorough assessment of your care needs and expectations. If you wish, we can liaise with other professionals involved in your care to ensure a coordinated and effective approach to your care is achieved.

T: 023 9400 1150

E: [enquiries@enchantingcare.com](mailto:enquiries@enchantingcare.com)

[www.enchantingcare.com](http://www.enchantingcare.com)

Enchanting Care, Unit 10, The Boulevard  
London Road, Waterlooville, Hampshire PO7 7DT

# Sherwood Florist

## FLORAL TRIBUTES

Located In Havant, we have a wide selection of tributes ranging from posies to bespoke.  
Our florists Becky and Tasha will be happy to help you at this difficult time.



Wreaths



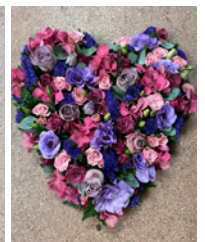
Casket Sprays



Bespoke Tributes



Single Ended Sprays



Hearts



Posies



Eco Tributes



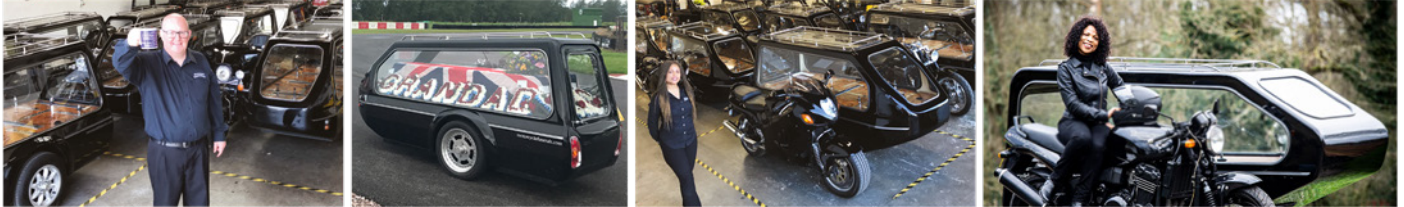
Named Tributes

Sherwood Florist, 47 West Street, Havant PO9 1LA T. 02392 477 182

# Motorcycle Funerals

BRITAIN'S FIRST MOTORCYCLE HEARSE SERVICE

The only fleet of motorcycle hearses in the world



Serving the whole of the British isles including, the Isle of Man, the Isle of Wight Guernsey, Jersey, Northern Island, France, and Norway. Wherever you are we will get there. We are here to serve you.

[www.motorcyclefunerals.com](http://www.motorcyclefunerals.com)

Bookings for Motorcycle Funerals UK Wide • Simply Call

01530 274 888 or 0845 375 2106

If you prefer trikes to bikes visit [www.trikefunerals.co.uk](http://www.trikefunerals.co.uk)

## Ex-Servicemen's Club

HAVANT

Function Room available for hire

Our spacious function room lends itself to all occasions, including funeral wakes and is available for hire to members and non-members.



We have a capacity of 110 people - 80 for sit-down dinners and you don't have to be a club member. The bar is large and offers a great selection of alcoholic and non-alcoholic drinks.

4 Brockhampton Lane, Havant, Hants PO9 1LU  
Tel: 02392 484605  
[www.ex-servicemensclub.co.uk](http://www.ex-servicemensclub.co.uk)

## The Blue Bell Inn

EMSWORTH

A busy local pub at the heart of the community



The Blue Bell Inn is located only yards from the quay in Emsworth, boasting terrific views from the terrace, and is renowned for superb food served in a proper pub. This busy local at the heart of the community is the perfect spot to host an intimate, peaceful event, such as a funeral wake.

29 South Street, Emsworth, Hampshire PO10 7EG  
Tel: 01243 373 394  
[www.bluebellinnemsworth.co.uk](http://www.bluebellinnemsworth.co.uk)  
[info@bluebellinnemsworth.co.uk](mailto:info@bluebellinnemsworth.co.uk)

# The Flying Swan

BOSHAM

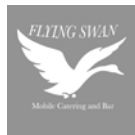
High quality catering and mobile bar service



Our catering packages include a wide variety of food and drinks, all tailored to your requirements and budget.

Please send us a message or call us today to see how we can help you plan the perfect event.

Tel: 01243 697273  
e. [flyingswanbosham@gmail.com](mailto:flyingswanbosham@gmail.com)  
[facebook.com/flyingswanbosham](https://www.facebook.com/flyingswanbosham)



# The White Swan

BOSHAM

Public House & Private Functions



The White Swan in Bosham dates back to the 18th Century when it featured as a Coaching Inn. Now fully restored, this grade II listed free house offers its customers a warm and friendly welcome for daily lunches and evening meals.

Award-winning ales and an array of wines have been carefully chosen to compliment the delicious seasonal dishes designed by our in-house chef, and prepared from scratch for guaranteed quality and freshness.

Station Road, Bosham, Chichester, West Sussex PO18 8NG

Tel: 01243 697273  
e. [hello@whiteswanbosham.co.uk](mailto:hello@whiteswanbosham.co.uk)  
[facebook.com/whiteswanbosham](https://www.facebook.com/whiteswanbosham)  
[www.whiteswanbosham.co.uk](http://www.whiteswanbosham.co.uk)



# Lee Kewell

CELEBRANT

To Mourn A Death, To Honour A Life And Bring Comfort To The Living



My name is Lee Kewell, and I work as an Independent Funeral Celebrant. My work is to compose and deliver unique funeral services in the Hampshire and West Sussex area. I am totally independent from any Religious or Humanistic organisation and respect the wishes of all. With your input and ideas we can together create a funeral service that will be truly memorable. To discuss your requirements further please email me for more information or alternatively if you prefer, please call me. I look forward to meeting with you.

T. 07504 179224  
e. [info@leekewell.com](mailto:info@leekewell.com) | [www.leekewell.com](http://www.leekewell.com)

# The Kings Arms

PRIVATE FUNCTIONS

A busy local pub at the heart of the community



The King's Arms makes a first-class choice when you're looking for a Hampshire function venue. It's ideal for all kinds of private events, including wakes. There are no room-hire charges to eat into your event budget, with a spacious garden perfect for a marquee. Talk to a member of staff today and we'll be happy to help you organise your event.

T. 01243 374941  
e. [gavinreid@kingsarmsemsworth.com](mailto:gavinreid@kingsarmsemsworth.com)  
[www.kingsarmsemsworth.co.uk](http://www.kingsarmsemsworth.co.uk)  
The King's Arms, 19 Havant Road, Emsworth  
Hampshire PO10 7JD

# Andrew & Andrew Solicitors

“For trust. For advice. For life.”

Andrew & Andrew Solicitors Ltd have been practising for over 70 years



At Andrew & Andrew Solicitors Ltd, our friendly and approachable Private Client team can provide a comprehensive and personal Probate, Wills and Estate Planning service, to meet your individual needs. We are proud of our 70 years professional experience in providing our service to Private Clients.

Our work is varied and we can assist with a number of topics, including:

- Making a Will
- Administering a deceased's estate and personal affairs
- Addressing inheritance tax matters
- Helping you to set up trusts
- Organising co-ownership of property
- Dealing with variations to a Will after death
- Resolving disputes should a Will or estate be contested

Thinking ahead does not need to be difficult. We are committed to ensuring the important matters are put in order, helping you plan for the future to ensure your assets are dealt with in accordance with your wishes.

Our Wills and Probate team are understanding and sympathetic towards your personal circumstances.

We will deal with all legal formalities on your behalf. In addition, we have a wealth of experience assisting the bereaved and elderly with any questions and concerns.

If you would like to discuss any of the above matters in further detail, please contact the Private Client team by telephone on local rate 023 9267 5555 or freephone 0800 083 6499. Alternatively, submit your query via any of the contact boxes on our website and we will contact you.



[www.a2solicitors.co.uk](http://www.a2solicitors.co.uk) | [e.office@a2law.co.uk](mailto:e.office@a2law.co.uk)

Andrew & Andrew Solicitors Limited – Portsmouth  
Atlantic House, 114 Kingston Crescent  
Portsmouth, Hampshire, PO2 8AL  
T: 023 9267 5555



Andrew & Andrew Solicitors Limited - Emsworth  
51 High Street, Emsworth  
Hampshire PO10 7AN  
T: 01243 68 0800



**MOORE'S**  
TRADITIONAL FUNERAL DIRECTORS



5 Hambledon Parade, Hambledon Road, Waterlooville, Hampshire PO7 6XE  
302-304 Main Road, Southbourne, West Sussex PO10 8JL  
11 North Street, Havant, Hampshire PO9 1ET

We promise to give you a personalised service with support,  
care and reassurance when you need it most.

Waterlooville: 02392 641366 Southbourne: 01243 374644  
Havant: 02392 175462 [www.mooresfd.co.uk](http://www.mooresfd.co.uk)

